

# PATTAYA GUIDE

## YOUR FREE Pattaya GUIDE FROM THE ASIA TRAVEL SPECIALISTS

Always switched on and fun, Pattaya's beaches are daily brimming with life, as water sports lovers and sun worshippers take to the waters. After dark, the action shifts to the streets and clubs, as revellers explore its electrifying nightlife scene, where drinking and partying continue until dawn.

Apart from water sports and nightlife, Pattaya offers endless possibilities when it comes to shopping, sightseeing, dining, accommodation and entertainment. It has outgrown its image as a seedy beach town to a destination reaching for a wider audience, whether it is couples, families, business travellers, or even musicians. Some 147km from Bangkok, it is the closest of Thailand's major beach resorts to the capital city.



### WEATHER

[MORE](#)

Like Bangkok, Pattaya's climate is influenced by two monsoons. From May to October, the Southwestern monsoon brings intense but usually brief downpours (avg. 2531° C); bars and beaches are less crowded and hotel rates are lower. March, April and May are the hottest months (avg. 2632° C); coupled with relative humidity at 73% on average, it can feel hot and sticky.

November through to February sees very little rain and a relatively cooler climate (avg. 23-30° C). This is the busiest time on the Pattaya tourist calendar. Best time to go: November to February

<http://www.pattaya.bangkok.com/weather.htm>

### GETTING AROUND

[MORE](#)

Pattaya's singlelane roads are well known for their traffic jams, particularly after sunset and during the peak season (Nov/Feb). One contributing factor is the proliferation of song-taews (aka 'baht buses' – converted pickup trucks), which make frequent and unannounced stops. These songtaews are your best bet when getting around Pattaya, Jomtien and outlying neighbourhoods.

Other options include motorbike taxis, easily identified from the operators' colourful vests, and car, jeep or motorbike rentals. Like the baht bus, you can hail a motorbike taxi when you see one riding by. To rent a car or jeep, you need to have a valid driver's license (Thai or international) ready, in case the police flag you down, but local rental companies rarely ask to see it. Note that without a valid driver's license, your insurance is invalid.

<http://www.pattaya.bangkok.com/gettingaround.htm>

### SIM CARDS AND DIALING PREFIXES



Prepaid SIM cards are available for purchase at 7Elevens and Family Marts, as well as the service operators' shops – DTAC, AIS and TRUE – located inside shopping malls. Alternatively, the best place to get a cheap mobile phone is Tuk Com (South Pattaya Road). To make a call to a landline within Pattaya, dial 038 then the sixdigit number. Making a call to Bangkok, dial 02 (area code), then the sevendigit number. Calls between mobile phones require the threedigit prefix (08x), followed by the sevendigit subscriber number.

### AIRPORT TRANSFERS

[MORE](#)

As you exit the arrival hall from Suvarnabhumi International Airport, you'll be confronted by many touts offering to transport you anywhere in Thailand, usually in a minivan or a limousine. These are invariably more expensive, so proceed on to the first floor and get a metered taxi from the official taxi stand or find a bus service stand near Gate 7 and buy your ticket(s) to Pattaya.

Better yet, arrive in style via the airport limousine service (24 hrs). Book one in advance through [www.bangkok.com/transfer.htm](http://www.bangkok.com/transfer.htm) or, upon arrival, locate the nearest service counter in the arrival hall (Second Floor). From UTapao International Airport, the taxi/bus service desk on the First Floor (arrival hall) can help arrange a taxi or bus to your destination.

<http://www.pattaya.bangkok.com/gettingthere.htm>

### CURRENCY

Thai baht (THB). US\$1 = approximately THB 30.00

### TIME ZONE

GMT+7 (the same as Cambodia, Laos and Vietnam).

### ELECTRICITY

Voltage is 220 Volts with either two flat blades (NEMA 1-15 or JIS C 8303) or round two pin plugs (Europlug CEE 7/16).

### IMPORTANT PHONE NUMBERS

Police	191
Tourist Police	1155, 038 429 371
Ambulance	1554
Fire	199
Marine Police	038 311 285
Bangkok Hospital Pattaya	1719
Pattaya International Hospital	038 428 374
Medical Emergency	1669
Operatorassisted overseas calls	100
Directory Assistance	1133
Flight Schedules (Suvarnabhumi)	1566
TAT Pattaya	038 428 750
Immigration	038 252 7501



## PATTAYA AREA GUIDES

“ Pattaya has a simple layout. Pattaya Beach covers some two-kilometre stretch of the eastern coastline, from the more serene Wongamat-Naklua and North Pattaya to the buzzing and vibrant Central and South Pattaya. The famous Walking Street, Pattaya Hill and Jomtien Beach - popular for water sports - lie to its south. Whether you're looking for class shopping, restaurants, clubs, bars and hotels in addition to sun, sand and sea, Pattaya truly has it all! ”



### 1 PATTAYA BEACH ROAD

Pattaya Beach Road is a scenic four-kilometre-long crescent of sand backed by a promenade and palm trees, a busy one-way road, and a dense layer of luxury hotels, shops, bars, restaurants and market stalls. The southern end is home to the nightlife that lends Pattaya its notoriety, while the northern end is calmer and less densely built up. Many of Pattaya's most exclusive resorts are found here, with prices reflecting their premium location opposite the beach and near the city's best shopping and nightlife. Mid-range hotels and open-sided beer bars are found inside the numbered lanes (sois) linking Beach Road and Pattaya Second Road.

[Read More...](#)

### 2 JOMTIEN BEACH

Jomtien Beach is ideal for those in search of a more secluded location and a milder beach culture than that of Pattaya Beach. Although still relatively peaceful, Jomtien also has a long strip of Beach Road lined with shops and restaurants. The quieter nightlife and less dynamic shopping scene may be a turn off for some, but what Jomtien offers in terms of privacy and atmosphere is a fair trade off. As for accommodation, Jomtien is not lacking either. You will find everything from secluded, luxury resorts to affordable hotels to guesthouses that are just a hop and skip away from the beachfront.

[Read More...](#)

### 3 WONG AMAT AND NAKLUA

Relatively speaking, North Pattaya is more serene and relaxed than Central or South Pattaya. But this is still part of Pattaya's city centre, with famous attractions including Alcazar and Tiffany's cabaret shows as well as the impressive Sanctuary of Truth – an immense quasi-religious carved wooden structure. Like Central and South Pattaya beaches, North Pattaya Beach is jam-packed with colourful beach chairs, umbrellas and possibilities for water sports. The Naklua and Wongamat area has a quiet and peaceful local neighborhood feel, perfect for visitors who want to be away from the buzz, yet close enough to reach Pattaya's major attractions and highlights in less than 10 minutes.

[Read More...](#)



### 4 PATTAYA SECOND ROAD

This central and very bustling main road lies parallel to Beach Road, only a couple of hundred metres inland. In terms of nightlife and shopping, those staying here are as well placed as those on Beach Road. Beer bars, restaurants, shops, malls and hotels line its sides, and Walking Street is just as accessible. However, within this densely built-up area, sea views and spacious facilities are harder to come by than on Beach Road. Most hotels are therefore of the budget or mid-range variety, both on the main road and tucked away in the numbered sois. While Sois 1 to 6 in the north are relatively quiet, those south of Central Pattaya Road (7 to 16) get progressively more lively.

### 5 WALKING STREET

This is the area immediately south of South Pattaya Road, flanked by Pattaya Hill to its left and Jomtien Beach to the South. It includes nightlife hotspot, Walking Street, thus hotels here are very well placed for those wanting to explore the notorious neon-lit stretch. Pattaya's best shopping and restaurants are also close by. Most of the hotels are inland though, and usually lack sea views. However, there are exceptions, like the stunning beachfront sanctuary that is Siam Bayshore Hotel. The longer and quieter Jomtien Beach is no more than 10 minutes away in a baht bus or song-taew.

### 6 PATTAYA HILL

A raised headland at the southern end of Pattaya Bay, Pattaya Hill is accessible by winding roads that lead to the top. Popular with families, it's full of up-market resorts with luxury facilities, large gardens, fine-dining restaurants, panoramic sea views and a quiet, serene atmosphere. Those staying here may feel somewhat alienated from Pattaya's brash action but are in fact only a few minutes' drive from it. Shopping and nightlife are just downhill. More bonuses: resorts typically have lots of recreational facilities for guests to enjoy, and Jomtien Beach – a quieter alternative to Pattaya Beach – is close by.

# WHAT TO SEE IN PATTAYA

“ As with its colourful beach culture, Pattaya’s attractions appeal to a wide spectrum of interests and tastes. From nature to religious monuments all the way to the weird and wonderful, there’s always something to discover, take delight in and share with family and friends here and back home. ”

## 1 TIFFANY SHOW

### NORTH PATTAYA

Tiffany’s Show was the first ever truly transvestite cabaret show in Southeast Asia. With over 28 years of stage experience, Tiffany’s Show is a firm favourite and a recommended attraction at Thailand’s most popular resort city. Millions of international visitors from every part of the world have experienced their spectacular performances and enjoyed their marvelous, talented and attractive performers. Book a ticket. [Read More...](#) [Book Now](#)



## 2 THE SANCTUARY OF TRUTH

### NA KLUEA

A unique fusion of religion, philosophy, art and culture, The Sanctuary of Truth, built entirely of teakwood, is neither a temple nor a palace even though it looks a bit like a hybrid of both. Best described as a monument to Thai craftsmanship, its awe-inspiring sculptures and carvings pay homage to, and are a reflection of the ‘Ancient Vision of Earth’, ‘Ancient Knowledge’ and ‘Eastern Philosophy’. [Read More...](#)



## 3 PATTAYA FLOATING MARKET

### JOMTIEN

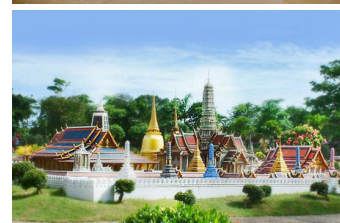
The Four Regions Floating Market is separated into sections – each representing and selling items from the major parts of Thailand (north, northeast, central and south). There’s also a regular afternoon cultural show, and you can hire a man-powered boat for four people for around 30 minutes. A walk through the hundreds of wooden houses built in the different styles of Thailand’s four regions is pleasant and fun. [Read More...](#)



## 4 MINI SIAM

### NORTH PATTAYA

Around the world in 80 days? Make it two hours! See the world’s wonders as well as Thailand’s popular attractions at Mini Siam, where nearly 100 replicas of famous sites worldwide – from the Temple of the Emerald Buddha to the Statue of Liberty – are displayed at a scale of 1 to 25. For entertainment value, Mini Siam is the perfect place to live out Gulliver’s Travels. [Read More...](#)



## 5 RIPLEY’S BELIEVE IT OR NOT

### SOUTH PATTAYA

Everything you see at Ripley’s Believe It or Not! will challenge your perception. Inspired by Robert Leroy Ripley’s Believe it or Not! books, the Ripley’s museum features more than 300 exhibits inside 10 individually themed galleries, from exhibits to people you never thought existed on this planet. In another section, Ripley’s World of Entertainment offers a Motion Master Theatre, complete with flight simulator technology. [Read More...](#)



## 6 PATTAYA ELEPHANT VILLAGE

### SOUTH PATTAYA

Delight in a wide range of shows and demonstrations such as elephant training techniques, bathing, traditional roundup methods and the highlight, the ‘Glong Sabad Chai’ (victory drum ceremony) with a war elephant. The Elephant Village was opened in 1973 as a home for former working elephants and they are in the fulltime care of the camp’s experienced mahouts. [Read More...](#)



## 7 UNDERWATER WORLD PATTAYA

### JOMTIEN

One of the largest and most modern aquariums in Asia, Underwater World Pattaya has a sub aqua tunnel divided into three different zones: Coral Reef, Shark and Ray, and the Giant Siam – home to more than 200 different marine species. Near the entrance, there is a Touch Pool displaying creatures found in rock pools at coastal areas around Thailand. The pool allows interaction between visitors and the marine animals. [Read More...](#)



## 8 PATTAYA TIGER ZOO

### BANG LAMUNG

At Pattaya Tiger Zoo, you will find Bengal tigers, dogs and pigs living together in harmony, thanks to the zoo’s rather unique feeding programme. Witness mother pigs feed tiger cubs alongside its own piglets, have your pictures taken with the cubs, watch the crocodile show, or enjoy riding on elephant back. Also, meet and feed the ostriches, single hump camels, kangaroos and an aviary of exotic birds. [Read More...](#)





# WHAT TO DO IN PATTAYA

“ When it comes to what to see or do in Pattaya, the sky is the limit. This vibrant coastal city’s got a slice of everything: off-shore explorations, water sports, deep-sea fishing, on-shore excursions, cabaret shows, botanical gardens, and the list goes on. To make life easy for you, we have singled out the top 10 most popular and present them in one neat package, leaving you with more time to actually enjoy your holiday. ”

## 1 TIFFANY SHOW

**PATTAYA 2ND ROAD - DURATION: 1.3 HOURS**

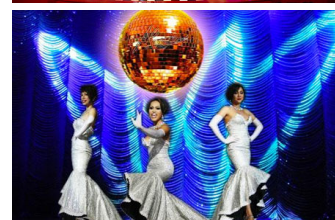
Everyone loves a great tale of adventure and romance. But this is nothing like watching “Moulin Rouge” on Blu-Ray or even at an IMAX 3D Theatre. In a breathless hour-long riot of sound, colour and light, experience a theatrical event that spans the entire hemisphere through song, dance or skit, from a Bollywood-style musical to Korean fan dance, slapstick burlesque to Broadway Spectacular. [Book Now](#)



## 2 ALCAZAR SHOW

**PATTAYA 2ND ROAD - DURATION: 1.3 HOURS**

It’s been said that if you want to see beautiful ladyboys, go to Tiffany; but if you want to see a great show, head over to Alcazar. Pattaya has made good of its long-time love affair with ladyboys. Extravagant costumes, convincingly stunning ladyboys, spectacular stage sets are all part of a grander show that delights you with non-stop fantasmic entertainment, from the Russian stage to K-Pop to Persian harlem and even outer space. [Book Now](#)



## 3 PATTAYA CORAL ISLAND

**CORAL ISLAND (KOH LARN) - DURATION: 7 TO 8 HOURS**

A 45-minute boat ride west of Pattaya, Koh Larn (Coral Island) offers a change of pace from the upbeat dynamism of Pattaya beaches and make a perfect day-trip. This former sleepy fishing village boasts translucent blue waters brimming with an abundance of coral and marine life. Relax on the fine white sand, get that perfect suntan, plunge in for a swim, or board a glass-bottom boat and watch the dramas unfold underneath your feet. [Book Now](#)



## 4 NONG NOOCH TROPICAL GARDEN

**SRIRACHA - DURATION: 7 TO 8 HOURS**

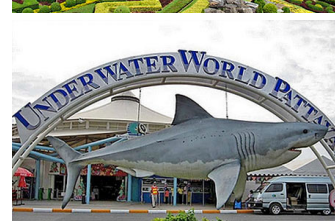
More than just a landscaped garden dotted with tropical plants and blossoms, this verdant theme park blends elements of Thai culture and family entertainment to create a fun day out for adults and children alike. Enjoy cultural performances, parades and a string of talent shows by a lovely troupe of Thai elephants. Other recreational activities include elephant riding, bicycling and paddle boating. [Book Now](#)



## 5 UNDERWATER WORLD BY SUBMARINE

**JOMTIEN (SUKHUMVIT ROAD) - DURATION: 2 HOURS**

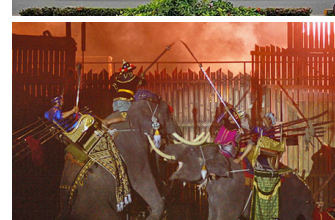
Thanks to the Beatles, we have all heard about the yellow submarine, but wouldn’t it be great to actually be inside the real thing? At Pattaya, you can. Traveling at a maximum speed of seven knots, this bright yellow vessel can dive to the depth of 100 metres. Jump in and explore the beautiful coral and marine animals just off the coast of Pattaya – without getting your hair or feet wet. [Book Now](#)



## 6 ALANGKARN SHOW

**JOMTIEN (SUKHUMVIT ROAD) - DURATION: 1.3 HOURS**

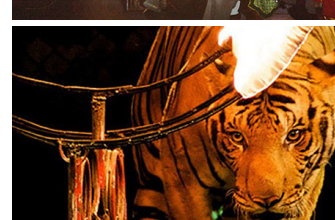
Declaring itself ‘The Extravaganza Show’, Alangkarn is a cultural theatre, circus, musical and world-class stage production all in one. It touches on facets of Thai history, culture and traditions in the two-hour production that proves to be both entertaining and spectacular. Expect to see lots of special light and sound effects, from multi-colour laser shows to stunning pyrotechnics, aerial acrobatics, dancing and great storytelling. [Book Now](#)



## 7 PATTAYA TIGER ZOO

**SRIRACHA AREA - DURATION: 5 HOURS**

At Pattaya Tiger Zoo, you will find Bengal tigers, dogs and pigs living together in harmony, thanks to the zoo’s rather unique feeding programme. Witness mother pigs feed tiger cubs alongside its own piglets. Have your pictures taken with the cubs, watch the crocodile show, or enjoy riding on elephant back. Also, meet and feed the ostriches, single hump camels, kangaroos and an aviary of exotic birds. [Book Now](#)



## 8 FLIGHT OF THE GIBBON ADVENTURE

**KHAO KHEOW - DURATION: 6.3 HOURS**

See the Jungle Through the Eyes of a Gibbon! Experience the beauty, magic and adventure of Thailand’s rainforest like never before. High in the treetops of a pristine national park, you’ll glide through the jungle canopy via 3km of thrilling wire zip-lines, scenic sky bridges and adrenaline-including abseils. Flight of the Gibbon is an educational adventure you will never forget, and will certainly be a highlight of your trip to Thailand. [Book Now](#)



# WHAT TO EAT IN PATTAYA

“ While Thai food needs little introduction, these popular dishes are must-try while you visit Thailand. The below list spans everything from staple backpacker favourites to Thai classics. Although some of them may sound familiar, don't be surprised if they taste nothing like what you usually find back home. ”

## 1 TOM YUM GOONG (SPICY SHRIMP SOUP)

A bold, refreshing blend of fragrant lemongrass, chilli, galangal, lime leaves, shallots, lime juice and fish sauce. Tom Yam is a versatile dish that can fit within virtually any meal – its invigorating sour-spicy-hot taste just screams 'Thailand'!



## 2 PAD THAI (THAI STYLE FRIED NOODLES)

From Cape Town to Khao San Road, the default international Thai dish. Dropped in a searing hot wok, fistfuls of small, thin noodles do a steamy minute-long dance alongside crunchy bean sprouts, spring onions and egg, before disembarking for the nearest plate.



## 3 GAENG DAENG (RED CURRY)

Made with morsels of meat, red curry paste, smooth coconut milk and topped off with a sprinkling of finely sliced kaffir lime leaves, this rich, aromatic curry always gets those taste buds tingling.



## 4 SOM TAM – (SPICY GREEN PAPAYA SALAD)

Hailing from the Northeast (Isan), this outlandish dish is both great divider - some can't get enough of its bite, some can't handle it – and greatly distinctive. Garlic, chilies, green beans, cherry tomatoes and shredded raw papaya get dramatically pulverized in a pestle and mortar, so releasing a rounded sweet-sour-spicy flavour that's not easily forgotten.



## 5 TOM KHA KAI (CHICKEN IN COCONUT SOUP)

A mild, tamer twist on Tom Yam, this iconic soup infuses fiery chilies, thinly sliced young galangal, crushed shallots, stalks of lemongrass and tender strips of chicken. Topped off with fresh lime leaves, it's a sweet-smelling concoction, both creamy and compelling.



## 6 PAK BOONG FAI DAENG (STIR-FRIED MORNING GLORY)

The leafy plant with hollow green stems and thin fragile leaves forms the main component of this super easy favourite. Cloves of garlic and birds eye chilies join it in a wok alongside oyster sauce, fish sauce and fermented bean. A few lazy stirs, and it's done!



## 7 GAENG KEOW WAN KAI (GREEN CHICKEN CURRY)

Another all-time favourite dish, served alongside a bowl of fragrant rice. Green curry paste and coconut milk form the creamy base. Morsels of fresh chicken, cherry-sized eggplants, bamboo shoots, sprigs of coriander and generous handfuls of sweet basil add body to this seminal curry.



## 8 YAM NUA (SPICY BEEF SALAD)

If there was such a thing as a 'Salad Hall of Fame', Yam Nua would surely take pride of place. The fresh, fiery thrill of Yam Nua – with its sprightly mix of onion, coriander, spearmint, lime, dried chili and tender strips of beef – perfectly embodies the invigorating in-the-mouth-thrill of all Thai salads, the yummy-ness of yam.





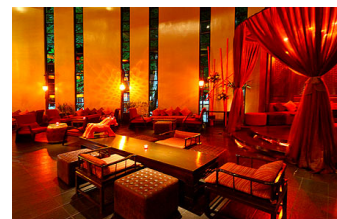
# WHERE TO EAT IN PATTAYA

“ Pattaya is a multi-cultural coastal city, and nothing reflects this better than its ethnically diverse dining scene. A wealth of options run from street vendors to fine dining, not only seafood or regional but also specialty cuisine, such as country-style French, Tuscan, Swiss, Scandinavian, Thai and, of course, som tam (northeastern Thai-style spicy papaya salad). ”

## 1 MANTRA RESTAURANT & BAR

### NORTH PATTAYA

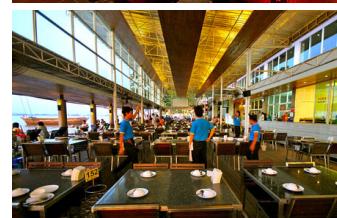
Mantra is a dynamic and stylish restaurant with a show kitchen concept and individually themed dining spaces. The interiors blend oriental art and a sophisticated colour scheme. Taking centre stage, the cooking stations are like open theatres where chefs whip up tasty Japanese, Indian, Chinese, Thai and Mediterranean fare to order. The Moroccan-themed bar with a walk-through wine cellar is ideal for enjoying pre- and post-dinner drinks. [Read More...](#)



## 2 MOOM AROI

### NAKLUA

Arguably the biggest and the most popular Thai seafood eatery in Pattaya, Moom Aroi (translating as 'delicious corner') is a two-storey restaurant with a seaside frontage. Popular dishes include stir-fried curry crab, seafood papaya salad, tom yam goong, stir-fried squid with salted egg yolk – all are delicious. Moom Aroi gets very busy every evening and especially during the weekend, so reservation is highly recommended. [Read More...](#)



## 3 VOLTERRA

### SOUTH PATTAYA

Tucked away in a soi behind the Walking Street, Voterra is a local favourite and the place to go for a delectable Italian meal. The Tuscan owner and chef has decades of culinary experience under his belt and ensures that the flavours stay fresh and original. Try some of the homemade specialties, such as spaghetti tratoria, pizza margherita and wild boar with black olive, with a selection of fine wine from Tuscany.



## 4 PREECHA SEAFOOD

### NA JOMTIEN

There's not much to the décor or atmosphere here, but this Thai-style seaside restaurant whips up some of the tastiest seafood in town. Walk through the aquarium section at the entrance and the restaurant opens out to the ocean, with a terrace jutting out over the water. Don't miss the signature dishes, including chili salt mantis shrimp, baked scallops and blue crab som tam. Most of the diners are Thai – a good indicator of truly Thai tastes.



## 5 BRUNO'S

### JOMTIEN

The renowned Bruno's has been a favourite dining out venue for locals and holidaymakers since 1996, offering classy European cuisine along with local popular fare. Signature dishes include pan-seared scallops, parmesan cream soup and twice-cooked Australian lamb rack. The walk-in wine cellar showcases an extensive selection of labels, mostly from the Old World, and a handful of top-shelf labels from across the globe.



## 6 AU BON COIN

### NORTH PATTAYA

Set inside a two-storey house, this establishment serves up a range of hearty French fare. The décor has a rustic feel, with wood paneling, red marble counter and big glass windows, which all serves well to enhance the atmosphere. The a-la-carte and daily special menus feature the classics – onion soup, stuffed mussels, Nicoise salad, boeuf bourguignon – and delicacies such as duck foie gras and rabbit stew.



## 7 CABBAGES AND CONDOMS

### JOMTIEN

Cabbages and Condoms Restaurant is the most unique restaurant in Pattaya with stunning ocean views from elevated decking and a wide-ranging menu to keep the whole family happy. The restaurant is part of a wider social project started in the 1980s to help educate the country about family planning (hence the name), but it is done in an entertaining way and is not seedy or serious. [Read More...](#)



## 8 HOPF BREW HOUSE

### CENTRAL PATTAYA

This restaurant and bar is the very best of its kind in Pattaya, serving down-to-earth European favourites and is suitable for the whole family. Come here to enjoy delicious stone-baked pizzas or their legendary German-inspired pork knuckle and wiener sausages. Hopf Brew House is easy to find on Beach Road in Central Pattaya and brews a range of delicious beers at its own micro brewery. [Read More...](#)



# WHERE TO GO FOR NIGHTLIFE

“ Girls, shows, bar games and competing stereotypes all combine to raise the ante in one huge party zone from Soi 13 to Soi 16 in South Pattaya. Closed to traffic during the evening, the area becomes the famous Walking Street, where A Go-Gos, discos, massage parlours and dozens of bar-beers compete with your immediate attention. Stroll here for maximum exposure along the main street and adjoining small sois. ”

## 1 PATTAYA WALKING STREET

**SOUTH PATTAYA - AFTER 20:00**

Most of the nightlife action geared towards tourists is found in Walking Street, with the densest concentration of bars, massage parlours and discos along the famous neon-drenched strip stretching from Soi 13 to 16. Unique and unruly, it's shut off to traffic during the evening, with raunchy shows, bar games, competing stereotypes and lots of booze all combining forces to make one huge party zone. [Read More...](#)

## 2 PUBBING AND CLUBBING ALONG PATTAYA BEACH ROAD

**PATTAYA BEACH ROAD - AFTER 21:00**

If naughty nightlife is just not you, try some traditional entertainment at one of the many pubs about town. For lively live music and dancing, hit Pattaya's enduring disco scene. The music is mostly rowdy US hip hop and Thai pop anthems at ear-shattering volumes. A few venues with hip modern interiors and names like Club Insomnia or Lucifer Disko TK are even sometimes sophisticated. Best time to go: after 21:00

## 3 BEER BARS IN SOUTH PATTAYA

**SOUTH PATTAYA - OPEN: AROUND MIDDAY ONWARDS**

They're ramshackle, cheap and loud but often a lot of fun – Pattaya's beer bars are legendary! Some are found in enclosed shop-houses, but most come jam-packed together inside tatty open-plan corrugated sheds around Walking Street and lower Beach Road, each comprising little more than a few stools and raised speakers assembled round a rather sorry-looking central bar. Open: around midday onwards

## 4 JOMTIEN BEACH

**NA JOMTIEN**

Those that don't head to Pattaya Beach for a night of partying can relax in one of Jomtien's many bars and restaurants, head to a cultural show like Alankarn, or just chill out around their hotel. There's also a small gay scene and open-front beer bars concentrated along Thappaya Road, Jomtien Complex, Soit Whitehouse and Soi 7. Without a huge crowd of revellers, the atmosphere is a little more 'authentic'.

## 5 CABARET SHOW

**NORTH PATTAYA**

A must-see while in Pattaya, head over to Tiffany's or Alcaza. Match dazzling stage sets with blindingly shiny costumes and stunning ladyboys, and you have a show so mind-blowing that it completely shatters the 'fourth wall' between audience and entertainers. In a breathless hour-long riot of sounds, colours and lights, experience a theatrical event that spans the entire hemisphere through song, dance or skit. [Read More...](#)

## 6 BEACH FOAM X PARTY AT HARD ROCK HOTEL

**NORTH PATTAYA - AFTER 21:30**

Saturdays at the famous American pop culture hotel are party time. The always lively poolside area morphs into a bubbling foam pool, with games, frolics and lots of fun. The milder, toned-down version for kids is between 17:00 and 18:30, while adults coming for the Beach Foam X Party are usually up to their necks in it at not long after 21:30. Location: Hard Rock Hotel, 429 Beach Road, North Pattaya

## 7 MUAY THAI MATCHES

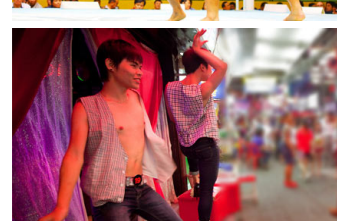
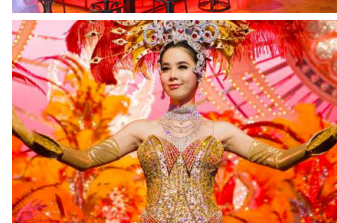
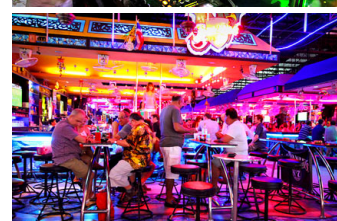
**SOUTH PATTAYA - BEST TIME TO GO: MATCHES START AT 19:00 AND CONTINUE UNTIL 23:00**

In Pattaya, Beer bars are not only good for drinks or picking up girls – they offer adrenaline-pumping entertainment as well. A number of open-sided bars lining Beach Road and Walking Street host nightly Muay Thai matches for the amusement of tourist spectators and those daring enough to enter the ring. Best time to go: matches start at 19:00 and continue until 23:00

## 8 GAY NIGHTLIFE IN SOI PATTAYALAND

**PATTAYA BEACH**

Pattaya Beach ensures muscle boys, bikers and toy boys are kept happy. Gay bars and A Go-Go joints are centred around the aptly named Boz Town (Soi Pattayaland 1 & 3). Highlights along these busy, noisy, neon-lit streets include Throb/Splash (325 Pattayaland 3), featuring a fish tank in which well-toned guys glide and dive gracefully through the water in very tight pants. Sune Plaza is just off the strip, quieter and more private.





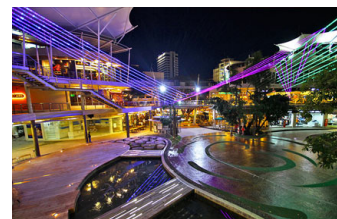
## WHERE TO SHOP

“ Shopping is a major pastime in Thailand, but surprisingly it doesn't seem to reach frenzy point in Pattaya the way it does in Bangkok, Chiang Mai or even Phuket. Perhaps, it's because there are so many other things to do here. But it doesn't mean there aren't places to shop in Pattaya – just don't expect a huge variety. ”

### 1 THE AVENUE PATTAYA

**PATTAYA SECOND ROAD - OPEN: 10:00-23:00**

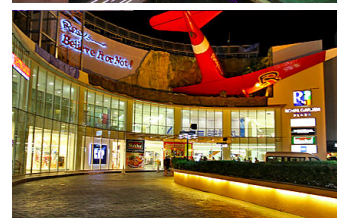
Catering to the lifestyles of the hip and young, the lineup of shops here resembles those found at Bangkok's J Avenue (Thonglor) and La Villa (Phaholyothin). Think Starbucks, iBerry, Au Bon Pain, Wine Connection and a host of branded sportswear and lifestyle stores like iStudio, Adidas, Geox and Puma. There's also an eight-screen cineplex and Blu-O, space-age bowling and karaoke club. [Read More...](#)



### 2 ROYAL GARDEN PLAZA PATTAYA

**SOUTH PATTAYA - OPEN: 10:30-23:00**

With a bright-red airplane sticking out of the building's top floor, this large, up-market mall is an air-con oasis of boutique shops, chain stores, restaurants, a food court and a two-screen multiplex. It also houses one of Pattaya's most popular attractions, Ripley's Believe It or Not! museum, where you can browse through some 300 exhibits showcasing all the world's oddest treasures and creatures. [Read More...](#)



### 3 CENTRAL FESTIVAL PATTAYA BEACH

**BEACH ROAD - OPEN: 11:00-23:00**

One of Pattaya's modern lifestyle shopping complexes, Central Festival Pattaya Beach features more than 200 leading brand shops (including Zara, Guess, DKNY Jeans, Diesel, MNG, Loft and more), a supermarket, bookstores, cinemas, an ice-skating rink and a host of entertainment venues and dining options. Facing the beach, you can also enjoy a lovely view of the ocean from the sixth floor. [Read More...](#)



### 4 WALKING STREET

**SOUTH PATTAYA**

Closed off to car traffic after sunset, the Walking Street sees business as usual during the day. The two street sides are sprinkled with shops selling mostly 'antiques', jewellery, paintings and souvenirs. But the main highlight is a handful of tailor shops where you can get bespoke clothes custom-made at affordable prices. Don't go for the cheapest deals or fastest delivery times, though, as quality tailoring takes time. [Read More...](#)



### 5 PATTAYA FLOATING MARKET

**JOMTIEN - OPEN: 10:00 - 23:00**

With more than 110 shops selling all kinds of regional crafts and souvenirs, shopping at Pattaya Floating Market can be more exciting than browsing row after row of street stalls. Stroll along the wooden boardwalk and make your way from one regional market to the next, enjoy an afternoon show, or sample local snacks from the boat vendors. The floating market is a delightful alternative. [Read More...](#)



### 6 OUTLET MALL PATTAYA

**NORTH PATTAYA - OPEN: 10:00-22:00**

The Factory Outlet Mall in Pattaya was the first of its kind in Thailand, offering big discounts on popular high street fashion brands for tourists and locals alike. There are enough shops here to keep the whole family happy and year round bargains ensure the place is always alive with activity; certain items are up to 70% off their original price. [Read More...](#)



### 7 STREET SHOPPING

**SOUTH PATTAYA**

For souvenirs, beach essentials and tacky goods, hit the beachfront stalls lining the southern stretch of Beach Road (south of Central Pattaya Road). Open all day and late into the night, goods here reflect a diverse array of enthusiasms: fake football shirts, surf shorts, bikinis, flick-knives, ethnic crafts, Buddha statues, rude T-shirts, hardcore porn DVDs, stun guns, and even Samurai swords.



### 8 SHOPPING BAZAARS AND WEEKEND MARKETS

**SOUTH PATTAYA - 08:00 TO 23:00.**

Thepprasit Market on Thepprasit Road near the junction with Sukhumvit Road is Pattaya's version of a weekend market. It has over 500 stalls offering food and a variety of goods. On Tuesdays and Fridays, Soi Buakhao Market sets up on the corner of South Pattaya Road and Soi Buakhao. The Made in Thailand Night Plaza on Second Road near Soi 10 is a warren of small shops offering locally made products each day from 08:00 to 23:00.





# TIPS AND GOOD TO KNOW



## BAHT BUS

The hop-on and hop-off song-taews called baht buses are the best way to get around Pattaya. However, as a newcomer to town, with a clueless look on your face, you will often be overcharged for the service. So, it's a good idea to ask your hotel's reception or a trusted person how much it should cost from point A to point B. Then, just hop on and pay that amount once you get to the destination.

## CARRY SMALL CHANGE

Thailand is relatively inexpensive, unless you plan to enjoy all your shopping, dining and nightlife inside a hotel or upscale shopping malls. Taxi drivers, food vendors and shop keepers usually don't carry change for big bills. So, make sure that you break the 1,000 baht notes into a few 100s and small coins upon arrival at the airport. The 5 and 10 baht coins usually come in handy when taking a taxi or public transportation.

## BARTER, BUT NICELY

The first rule of shopping in Thailand: if there's no barcode or set price, get haggling. It's expected. However, instead of adopting a confrontational "give me it for this price, now!" attitude, try the gracious, smiley "what's your best price, my friend?" approach. Why? Because a smile here goes further than a sneer. Aim to chip anything from 10-40% off the quoted price. And by all means, walk away if the price is disagreeable – more often than not you'll be called back for last-ditch negotiations!

## TIPS FOR FAMILY TRAVELLERS

Despite the city's effort to clean up its image, Pattaya remains pretty much an adult environment and after sunset, Pattaya lets it all hang out. Scantly clad bar girls touting potential clients, ladyboys parading Walking Street are not unusual sights. If you have small children with you, it's a good idea to stay at one of the beach resorts with all the facilities to keep your young ones entertained. The rule of thumb is to look up a hotel or resort in North Pattaya, Naklua or Jomtien Beaches, where the general atmosphere is family friendly.

## CARRY A PHOTOCOPY OF YOUR PASSPORT

Whether it be an impromptu demand from a local policeman or a request from security at one of the city's swanky nightspots, carrying ID is a must in Thailand. The fact that you are 25 but look like you're pushing 40 doesn't matter – proving who you are is a day-to-day formality, something the Thais are finicky about. Instead of dragging your passport around with you, and with it the constant fear of losing it, take a photocopy.

## CARRY A HOTEL CARD WITH THAI DIRECTIONS

It's simple. It isn't rocket science. But this ingenious device, little more than a piece of card with your hotel's address written on it in Thai, will save endless how-do-we-get-home headaches. Flash it beneath the eyes of your chosen driver and watch how his shrugs of utter incomprehension instantly change to reassuring nods.

## USEFUL LOCAL PHRASES

### Krab / Ka =

Words added at the end of a sentence/phrase to add politeness. Krab if you are a male. Ka if you are a female

### Phom / Chan = I (male / female)

### Khun = You (polite)

### Sawad Dee (krab / ka) = Hello (male / female)

### Khob Khun (krab / ka) = Thank you (male / female)

### Phom / Chan Pood Thai mai pen = I (male / female) don't speak Thai

### Hong nam yuu nai? = Where are the restrooms?

### Tao rai (krab / ka)? = How much does it cost (male / female)?

### Lod dai maak sood tao rai? = What's your best price?

### Pood len rue plao = Are you kidding?

### Nii khong jing rue khong plom = Is this real or fake?

### Ao ped ped = I want my food very spicy

### Mai ped = Not spicy

### Check bin / Kheb tang = Can I have the bill please?

### Khun lor / suay maak = You are very handsome / beautiful